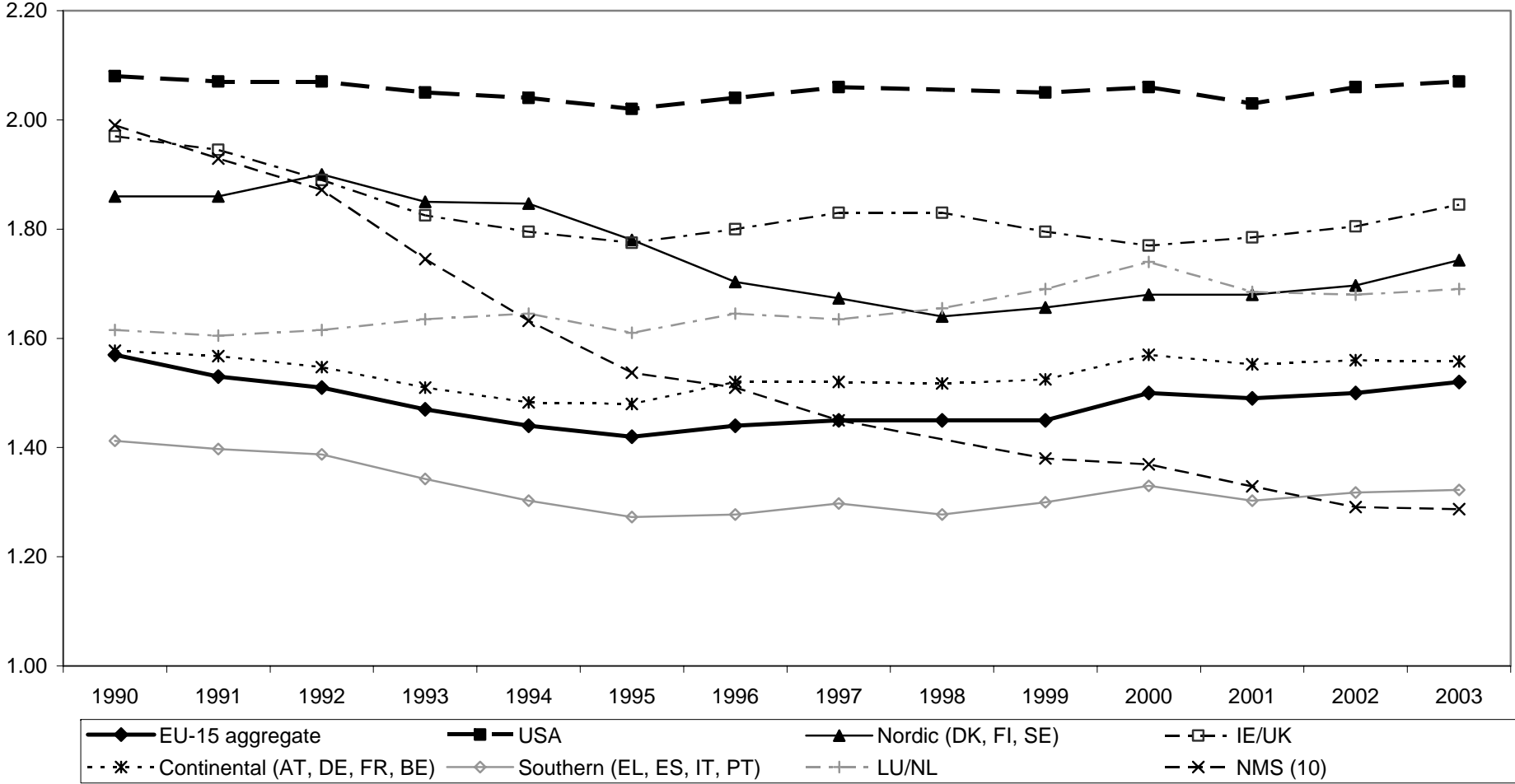
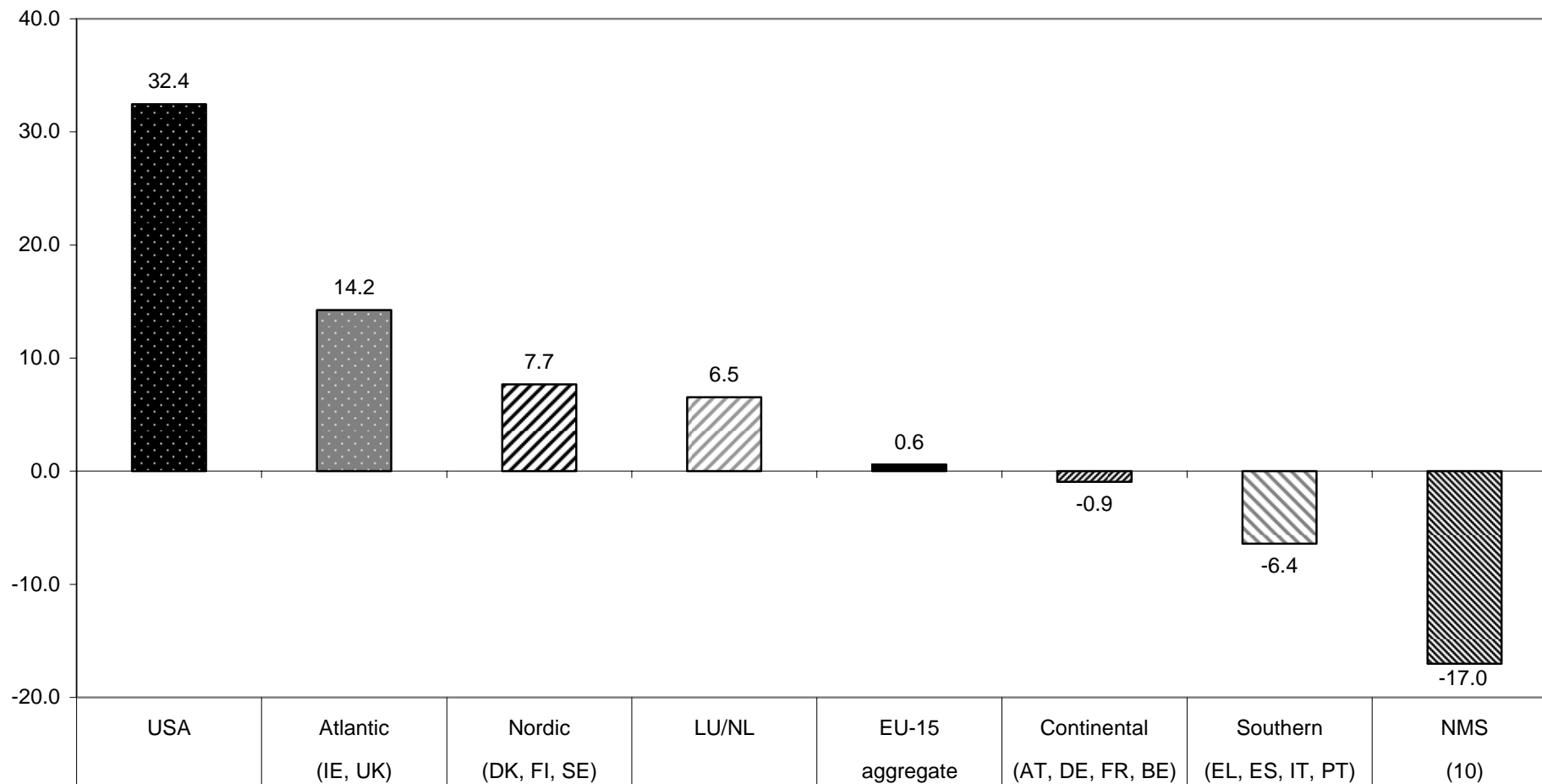


Figure 1: Development of fertility rates in Europe and the USA, 1990-2003



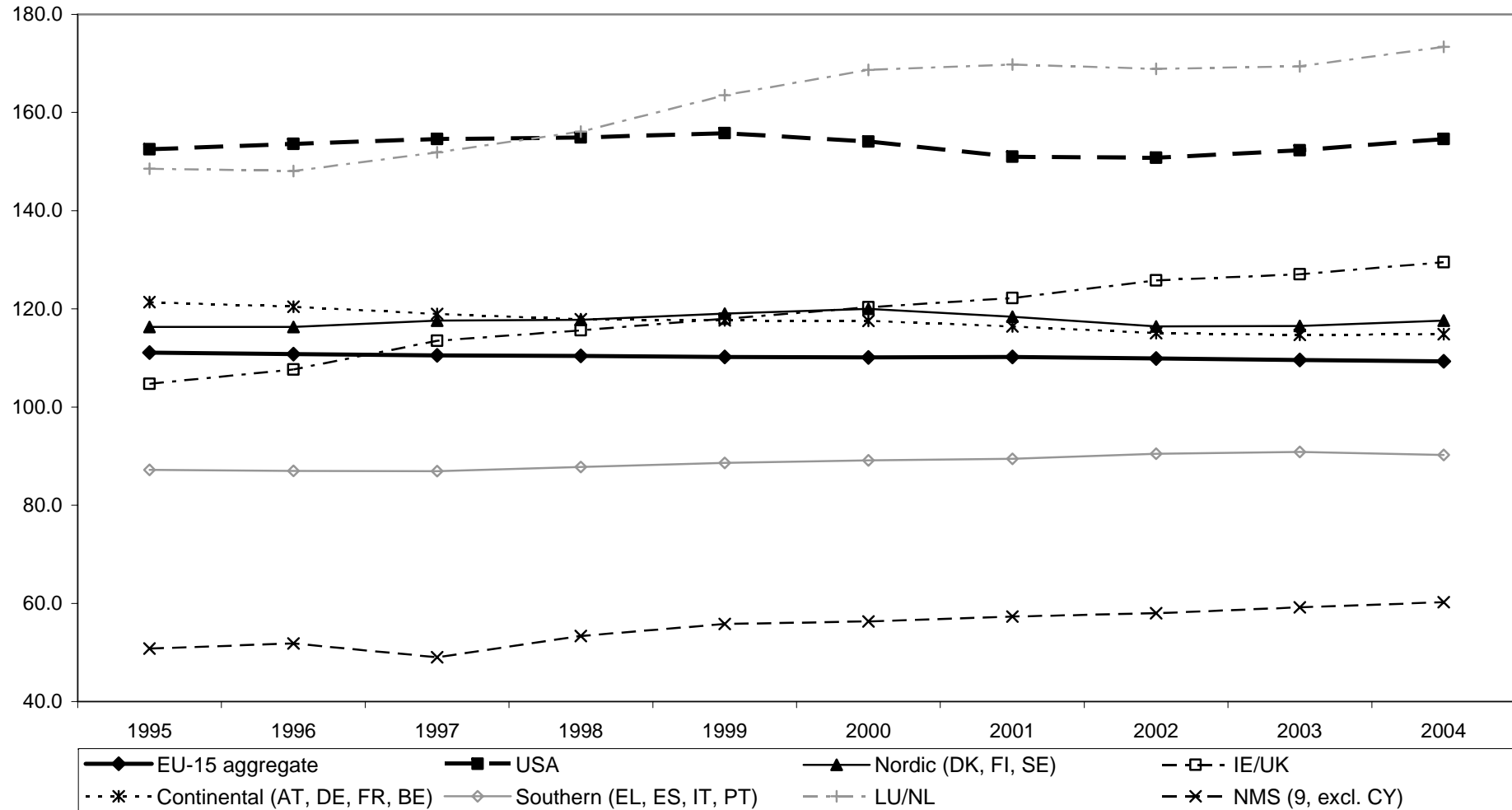
Source: Eurostat (2005)

Figure 2: Projected population development from 2005 to 2050 (percentage change)



Source: Calculated from United Nations (2005).

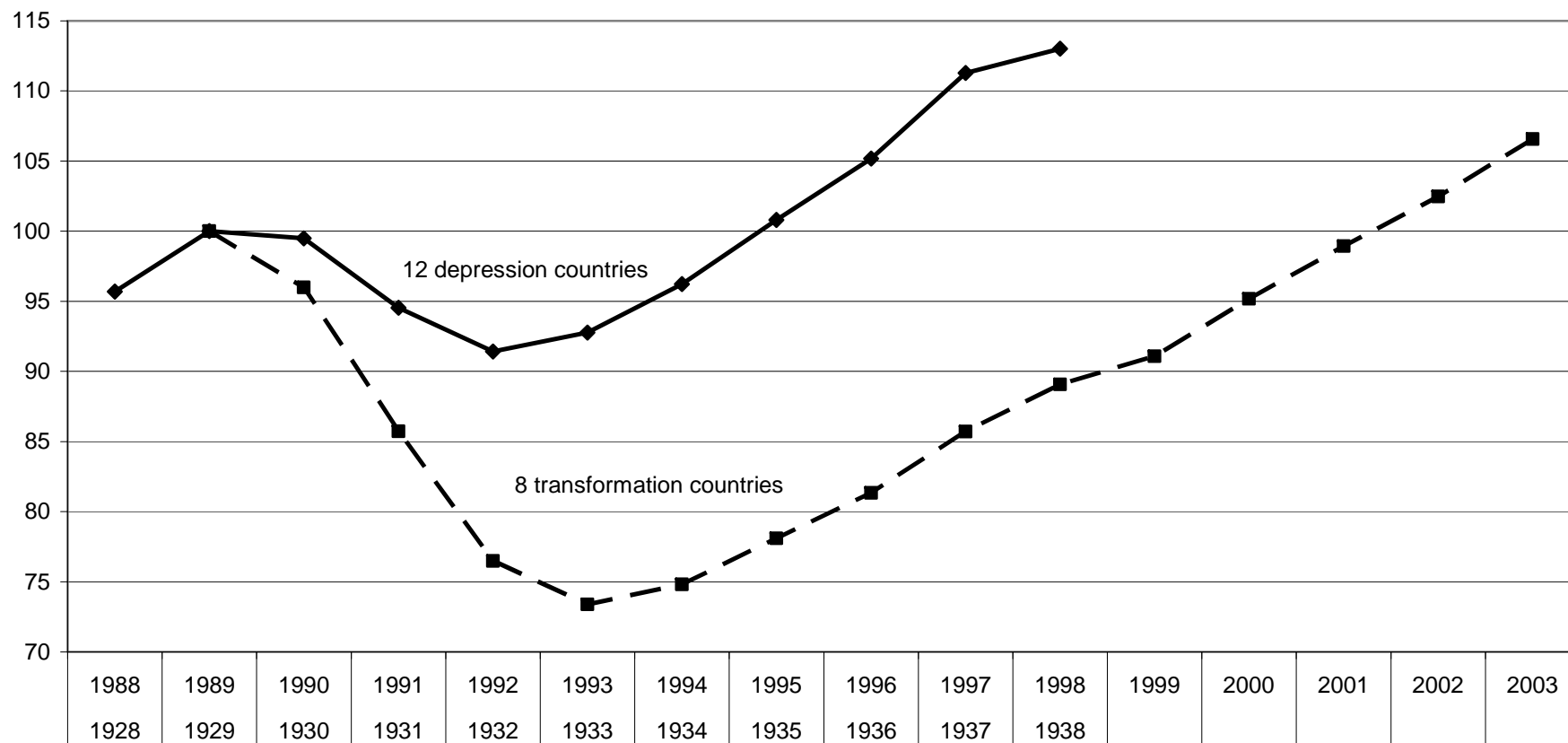
Figure 3: Development of GDP per capita (PPP, EU-25 = 100)



Source: Eurostat (2005).

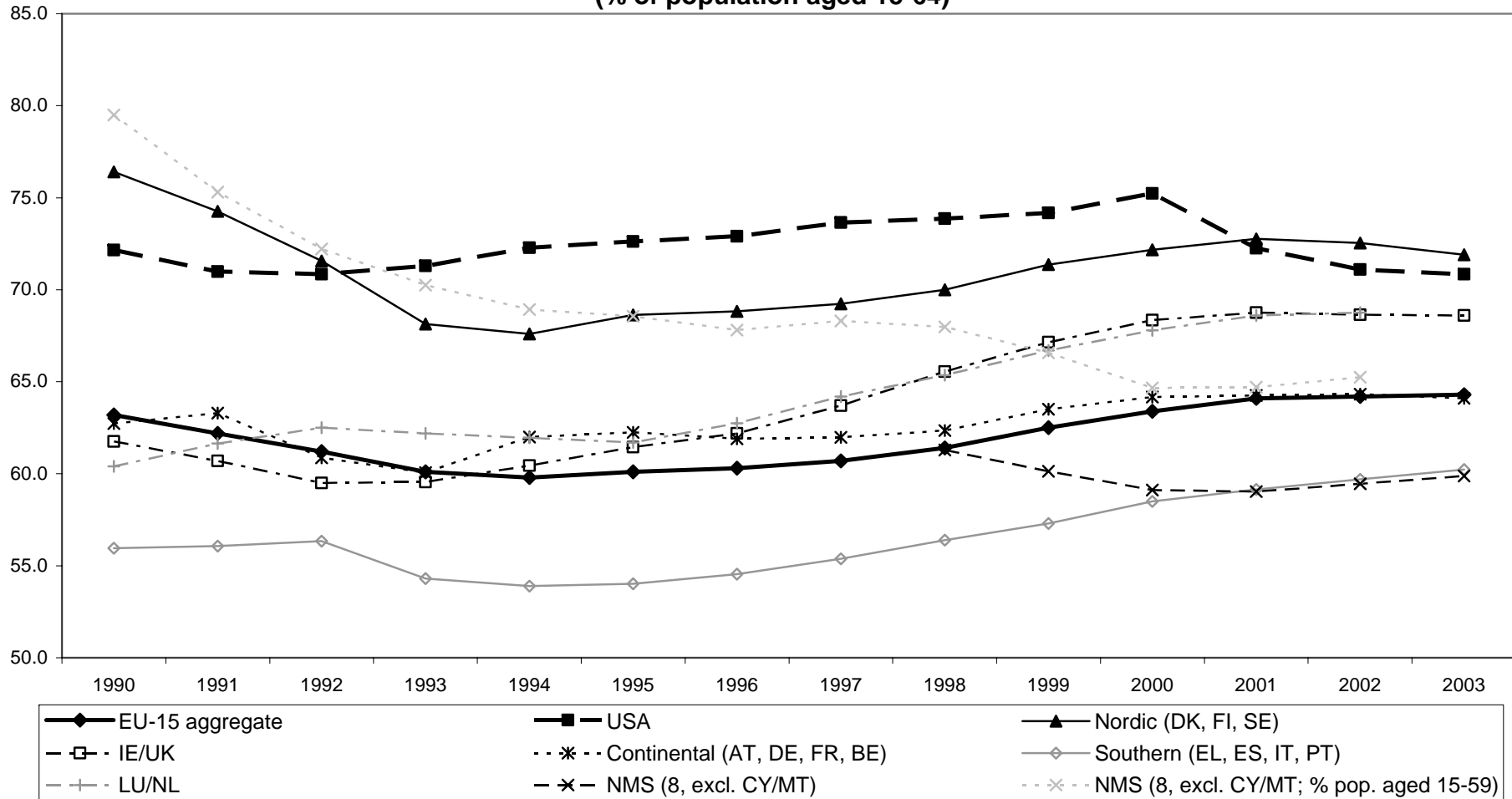
Figure 4: Economic development during the Great Depression and the post-socialist transformation

real GDP-growth, base year=100; unweighted averages for 12 countries during the depression (BE, DK, FR, DE, IT, NL, NO, SE, CH, UK, CA, US) and 8 post-socialist transformation countries (CZ, HU, PL, SK, SL, EE, LV, LT)



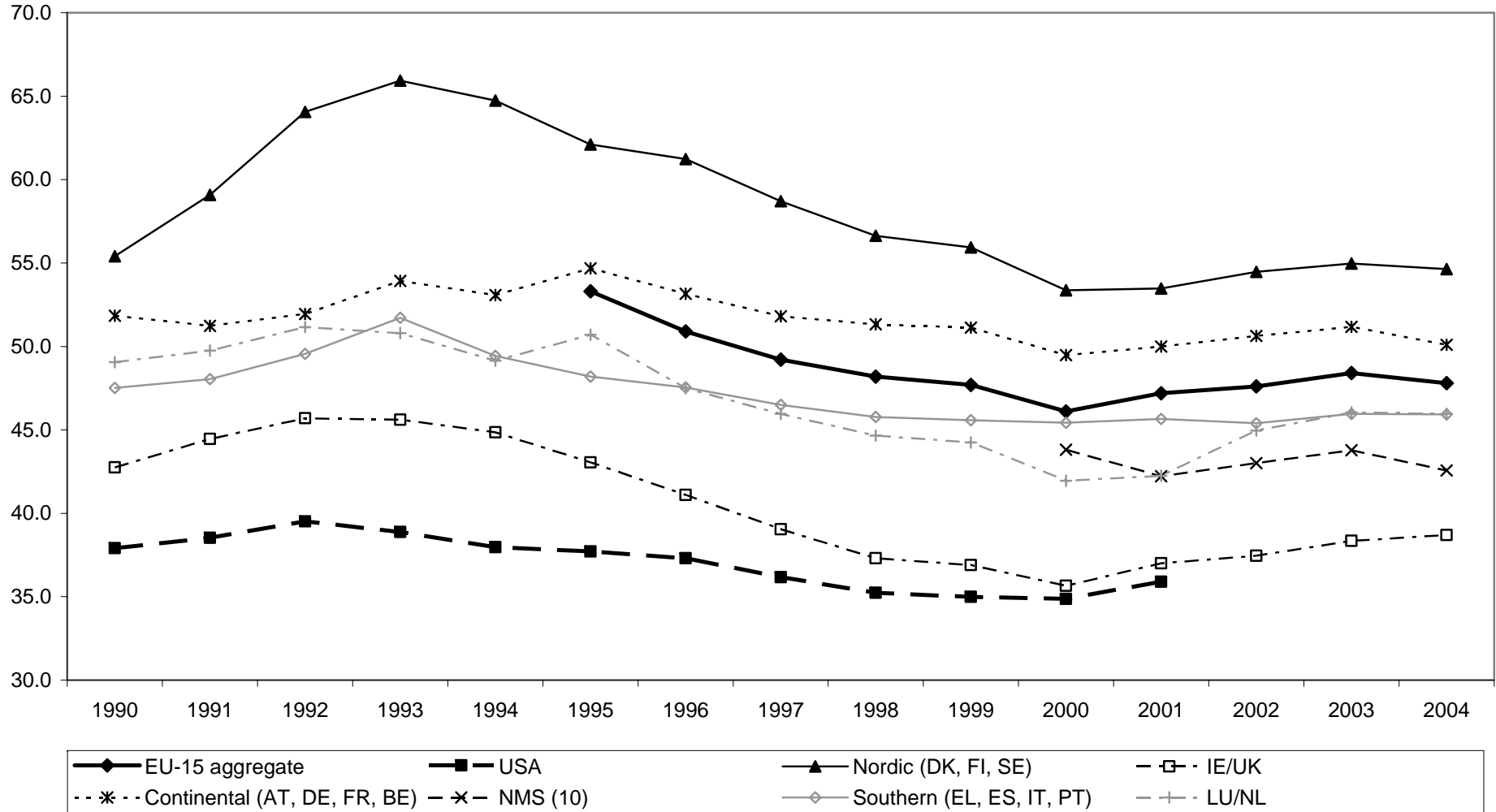
Source: 1928-1938, own calculations based on Maddison (1967: 201-202)
1989-2003, own calculations based on UNICEF (2004: 91).

Figure 5: Development of the employment rate in Europe and the USA, 1990-2003
 (% of population aged 15-64)



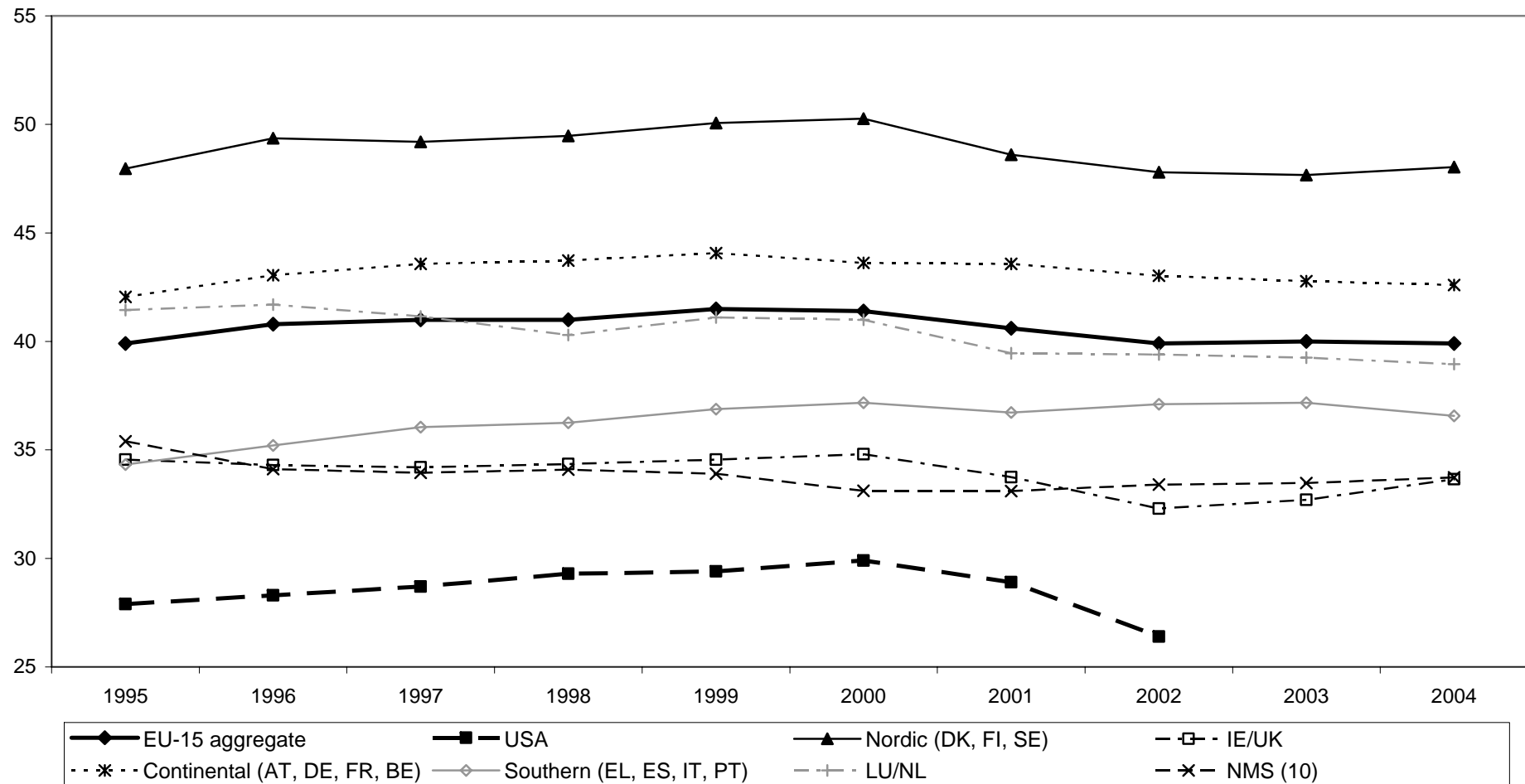
Source: EU-25: European Commission (1998)/(2004); NMS: 1998-2003: European Commission (2004); 1990-2003 (% 15-59): UNICEF (2004); USA: OECD (2004a).

Figure 6: Development of general government expenditure, 1990-2004 (% of GDP)



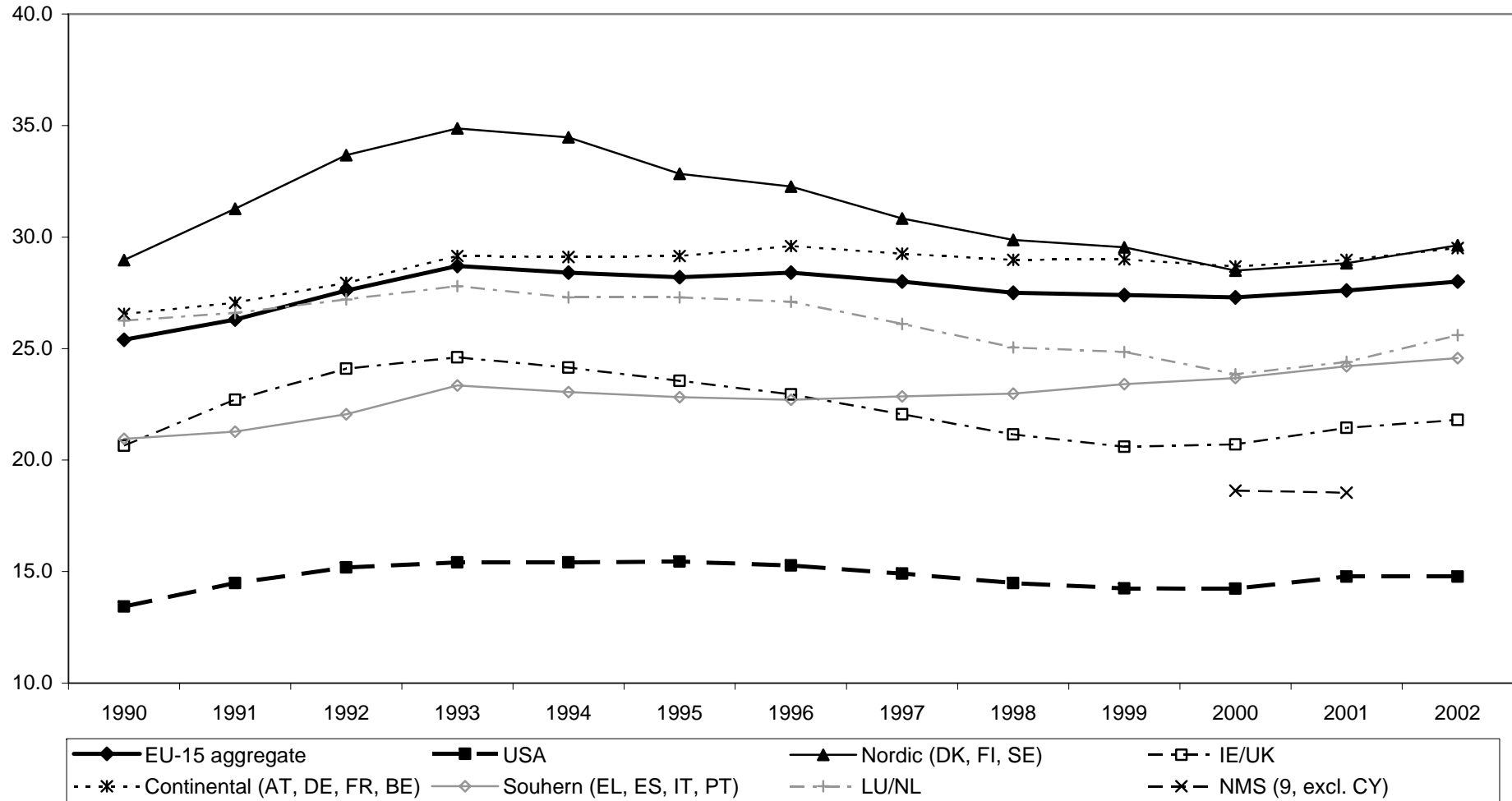
Source: Eurostat (2005); OECD (2004b)

**Figure 7: Development of public revenues from taxes and social contributions, 1995-2004
(% of GDP)**



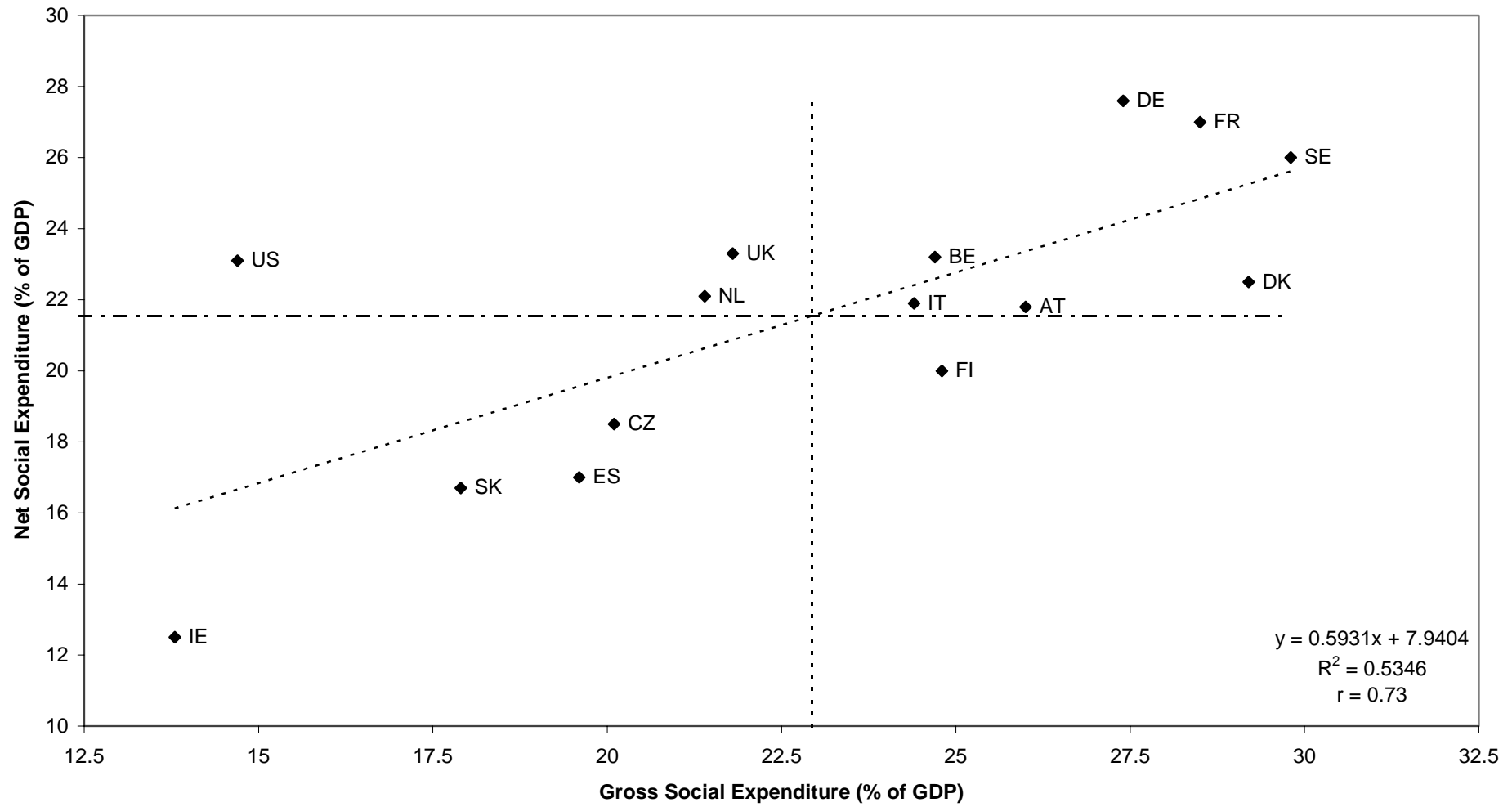
Source: Eurostat (2005); USA: OECD (2004c).

Figure 8: Development of social expenditure, 1990-2002 (% of GDP)



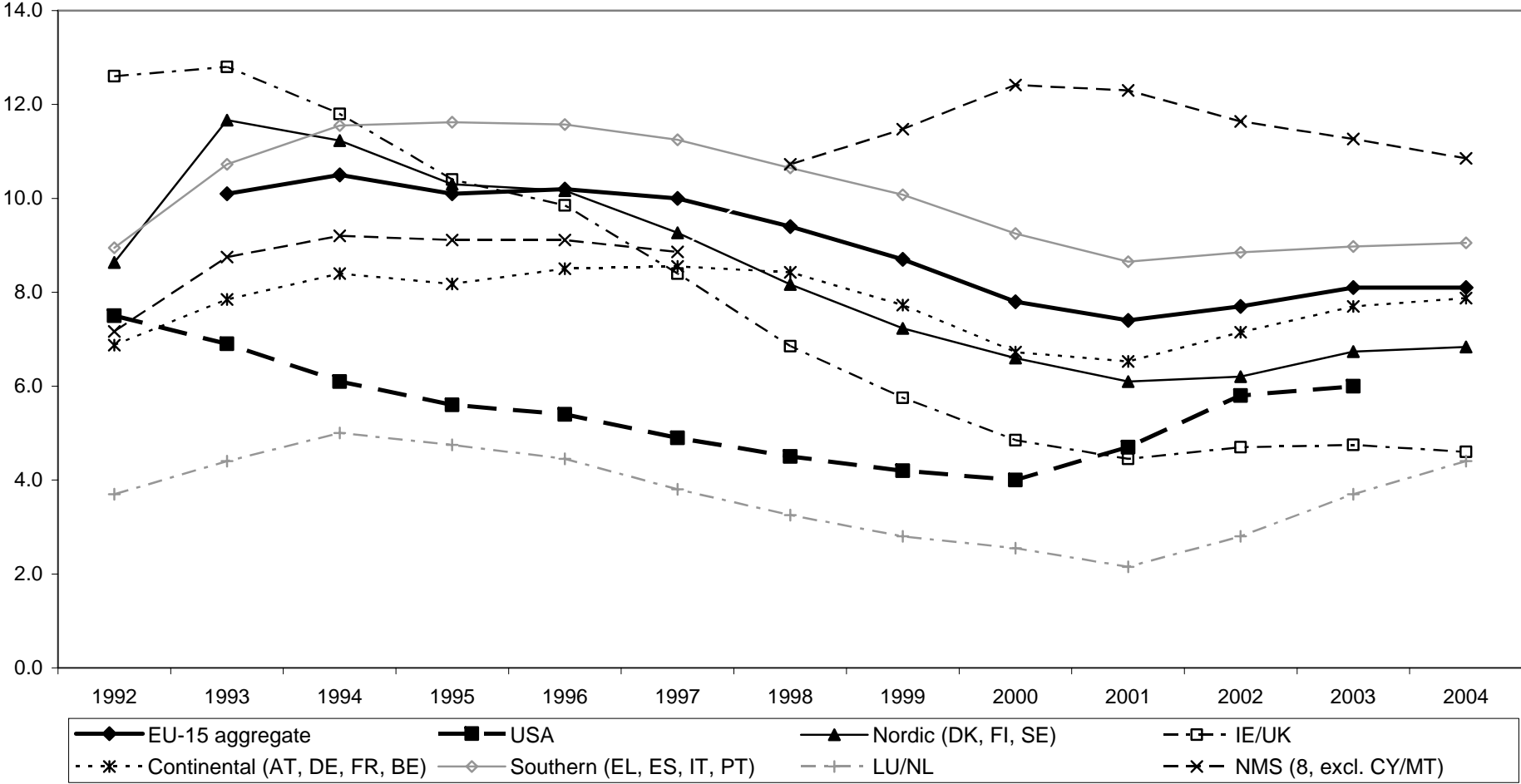
Source: Eurostat (2005); USA: OECD (2004b).

Figure 9: Gross and net social expenditure in Europe and the USA, 2001 (% of GDP)



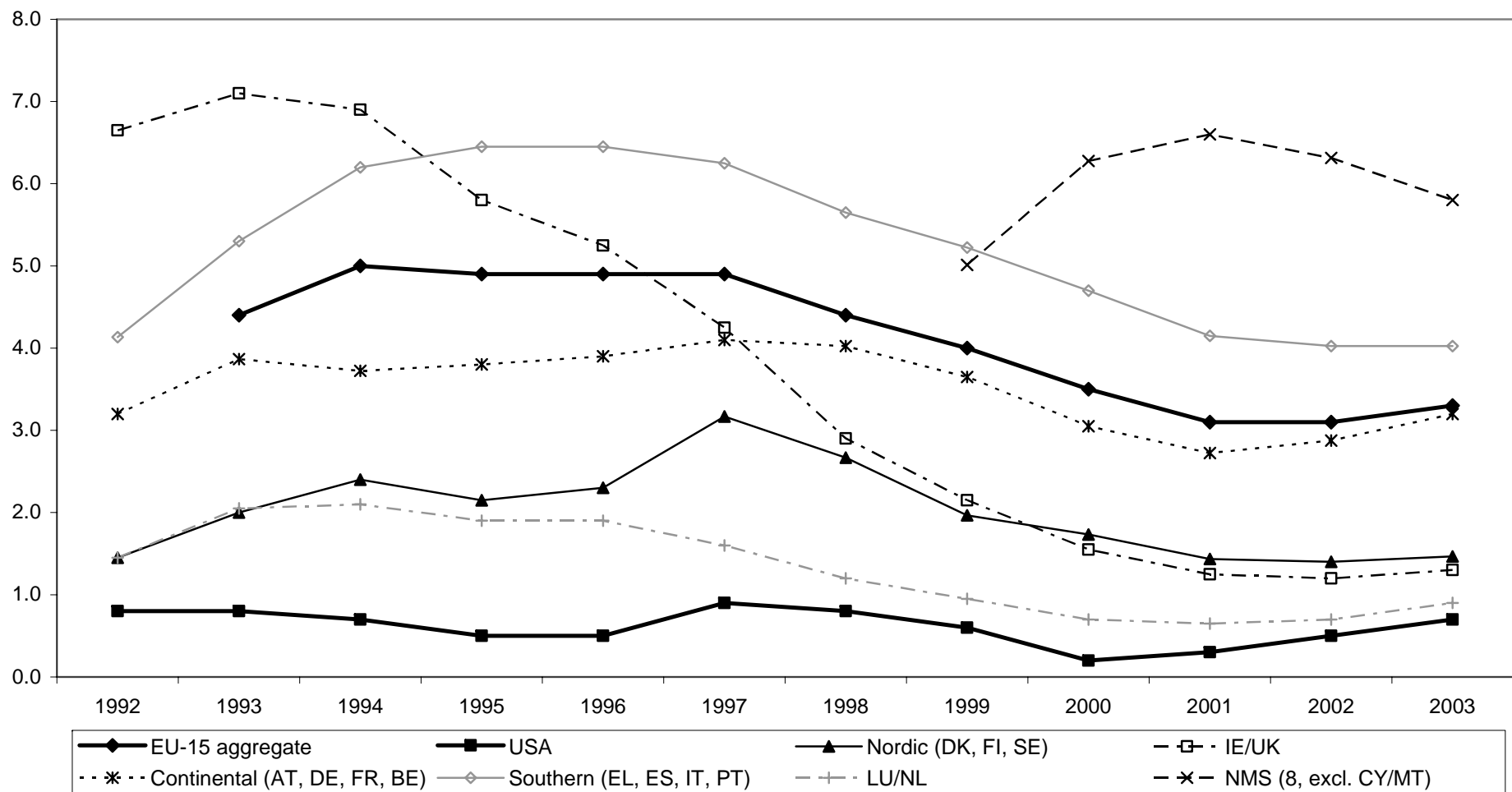
Source: Adema, W. & M. Ladaique (2005: 71).

**Figure 10: The development of the unemployment rate in Europe and the USA, 1992-2004
(as % of labour force)**



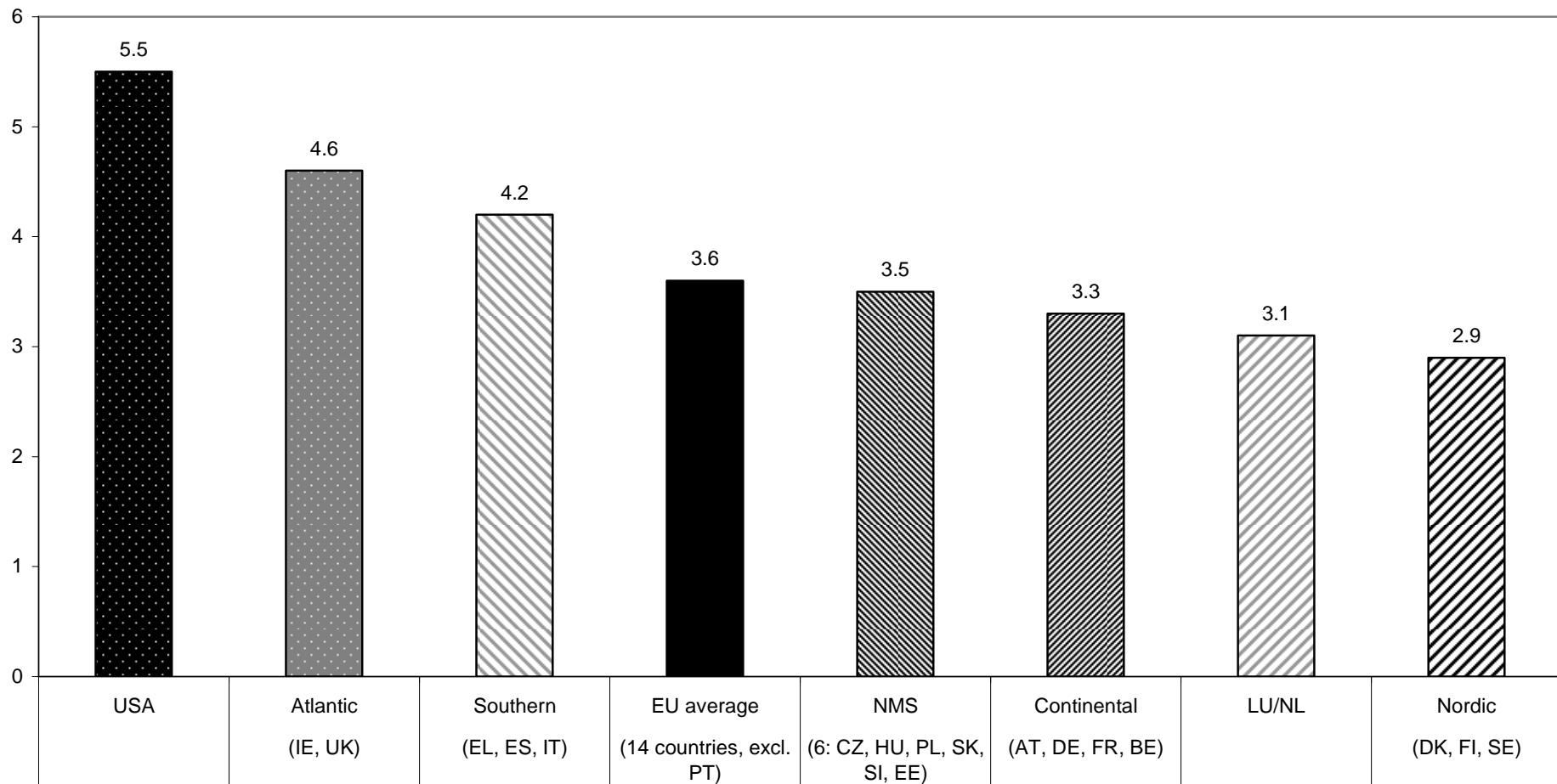
Source: EU-15: European Commission (2004)/(2005); NMS: 1992-1997: UNICEF (2004), 1998-2004: European Commission (2005); USA: OECD (2004a).

Figure 11: Development of the long-term unemployment rate, 1992 - 2003 (% of labour force)



Source: European Commission (2004).

Figure 12: Decile ratios (90/10th percentile) in Europe and the USA, around 2000



Source: Luxemburg Income Study (2005).

Table 1: The development of income inequality in Europe and the United States

Country	Gini Coefficient			90/50 Ratio			50/10 Ratio		
	1980s	c. 2000	Change	1980s	c. 2000	Change+/-	1980s	c. 2000	Change+/-
Denmark	0.254			1.60			2.01		
Finland	0.209	0.247	18	1.51	1.64	+	1.72	1.77	+
Sweden	0.218	0.252	16	1.51	1.68	+	1.79	1.76	-
Nordic	0.227	0.250	17	1.54	1.66	+	1.84	1.77	-
Austria	0.227	0.260	15	1.62	1.73	+	1.78	1.83	+
Belgium	0.227	0.277	22	1.62	1.74	+	1.69	1.90	+
France	0.292	0.288 ¹⁾	-1	1.93	1.91 ¹⁾	-	1.79	1.85 ¹⁾	+
Germany	0.268	0.264	-1	1.73	1.77	+	1.85	1.86	+
Continental	0.254	0.272	18	1.73	1.79	+	1.78	1.86	+
Greece		0.338			2.07			2.30	
Italy	0.306	0.333	9	1.97	1.99	+	2.06	2.25	+
Spain	0.318	0.340	7	2.02	2.09	+	2.16	2.29	+
Southern		0.337	13		2.05	+		2.28	+
Luxembourg	0.237	0.260	10	1.72	1.84	+	1.72	1.76	+
Netherlands	0.260	0.248*	-5	1.86	1.67*	-	1.58	1.78*	+
LU/NL	0.249	0.254	5	1.79	1.76	-	1.65	1.77	+
Ireland	0.328	0.323	-2	2.09	1.89	-	2.02	2.41	+
U. K.	0.303	0.345*	14	1.94	2.15*	+	1.95	2.13*	+
IE/UK	0.316	0.334	18	2.02	2.02	0	1.99	2.27	+
USA	0.335	0.368	10	2.04	2.10	+	2.80	2.60	-
Czech Rep.		0.259**			1.79**			1.68**	
Estonia		0.361			2.34			2.17	
Hungary		0.295*			1.94			1.84*	
Poland	0.271	0.293*	8	1.77	1.88*	+	1.98	1.91*	-
Slovak. Rep.		0.241**			1.62**			1.78**	
Slovenia		0.249*			1.67*			1.89*	
NMS		0.283			1.87			1.88	

¹ 1994

* 1999

** 1996

Source: Luxembourg Income Study (2005).

**Table 2: Relative income poverty in Europe and the United States
(Per cent below 50% of equivalent median income)**

Country	Total eurostat	Total (LIS)			Children (LIS)			Elderly (LIS)		
	ca. 2001 ¹⁾	1980s	2000	Change	1980s	2000	Change+/-	1980s	2000	Change+/-
Denmark	4	10.1			4.7			31.5		
Finland	6	5.4	5.4	0	2.8	2.8	0	11.9	8.5	-
Sweden	5	7.5	6.5	-	3.5	4.2	+	7.2	7.7	+
Nordic	5	7.7	6.0	-	3.7	3.5	-	16.9	8.1	-
Austria	6	6.7	7.7	+	4.8	7.8	+	18.5	13.7	-
Belgium	6	4.5	8.0	+	4.0	6.7	+	10.9	16.4	+
France	9	7.4	8.0 ²⁾	+	7.5	7.9 ²⁾	+	4.8	9.8 ²⁾	+
Germany	6	7.9	8.3	+	8.5	9.0	+	14.0	10.1	-
Continental	7	6.6	8.0	+	6.2	7.9	+	12.1	12.5	+
Greece	14		14.4			12.9			27.0	
Italy	13	10.4	12.7	+	11.4	16.6	+	13.1	13.7	+
Spain	13	12.2	14.3	+	12.7	16.1	+	18.8	23.4	+
Portugal	13									
Southern	13		13.8	+		15.2	+		21.4	+
Luxembourg	6	5.3	6.0	+	5.2	9.1	+	12.7	3.7	-
Netherlands	6	3.9	7.3*	+	2.7	9.8*	+	3.7	2.4*	-
LU/NL	6	4.6	6.7	+	4.0	9.5	+	8.2	3.1	-
Ireland	15	11.1	16.5	+	13.8	17.2	+	14.4	35.8	+
U. K.	11	9.1	12.4*	+	12.5	15.3*	+	7.0	20.5*	+
IE/UK	13	10.1	14.5	+	13.2	16.3	+	10.7	28.2	+
USA	17	17.8	17.0	-	25.1	21.9	-	23.5	24.7	+
Czech Rep.	4		4.9**			6.6**			7.4**	
Hungary	6		6.7*			8.8*			3.7*	
Poland	10	9.7	8.6*	-	11.7	12.7*	+	17.0	3.6*	-
Slovak. Rep.	16		7.0**			(na)			(na)	
Estonia	11		12.4			13.6			11.0	
Latvia	9									
Lithuania	10									
Slovenia	6		8.2*			6.9*			17.9*	
NMS	9		8.0			9.5			11.4	

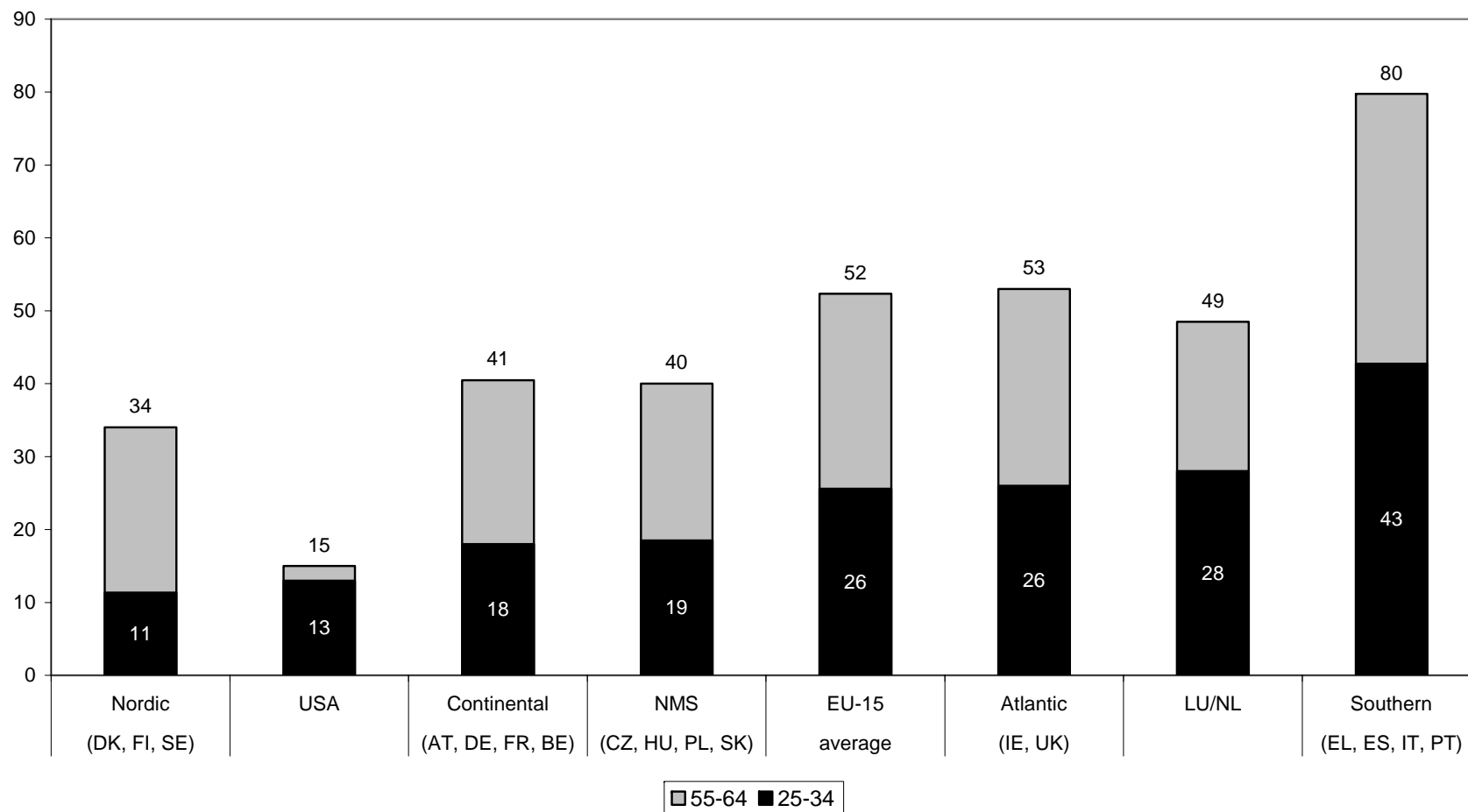
1 Eurostat 2 1994

* 1999 ** 1996

[\(na\) = due to the nature of the survey, figures are unavailable](#)

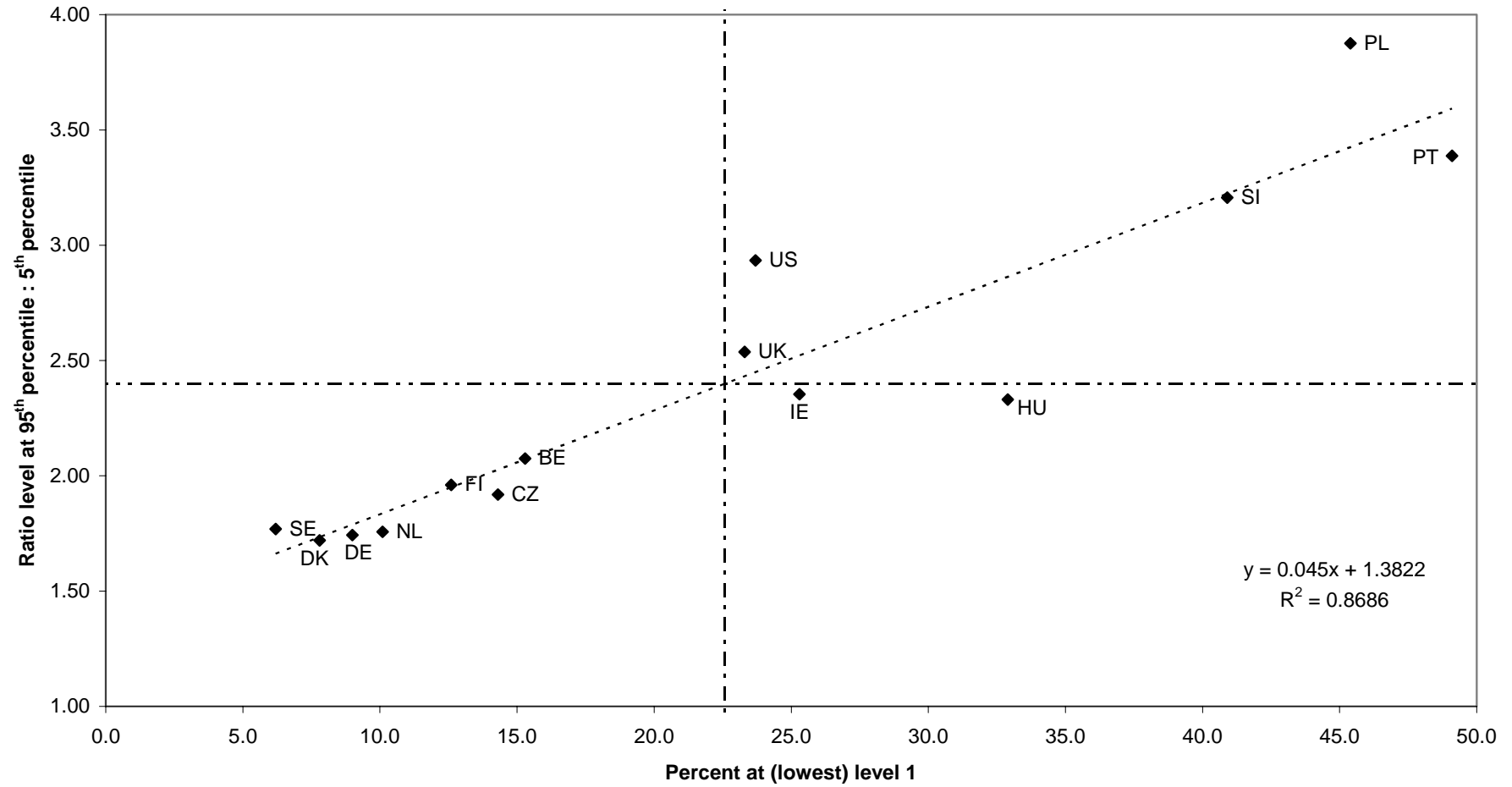
Source: Luxembourg Income Study (2005).

Figure 13: Educational poverty, 2003 (Percent of population aged 25 to 34 and 55 to 64 that has not attained at least upper secondary education)



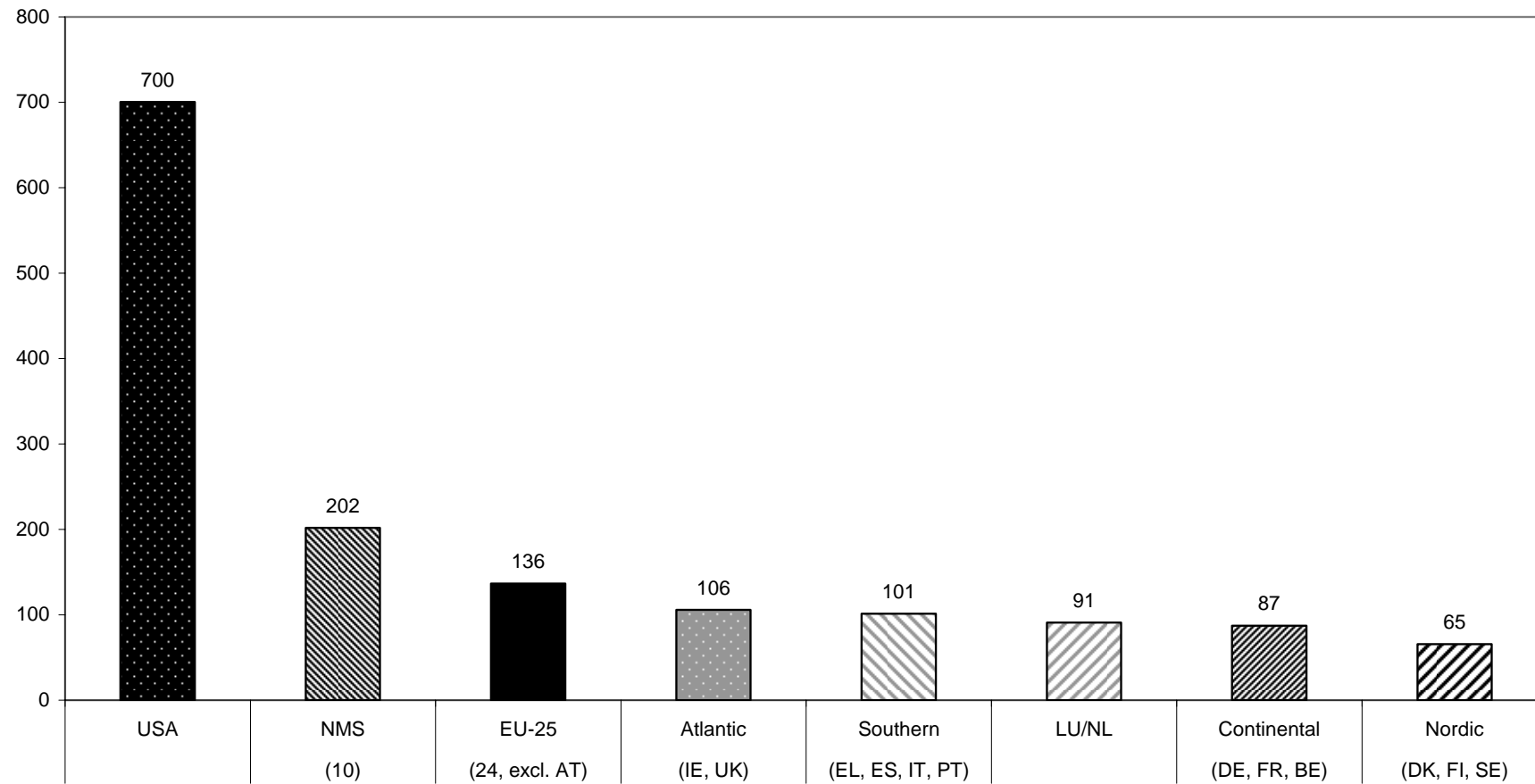
Source: Calculated from OECD (2005: 36).

Figure 14: Level and inequality of document literacy in Europe and the USA, 1994/98



Source: Based on OECD and Statistics Canada (2000).

Figure 15: Incarcerated persons per 100 000 of population, around 2002



Source: Based on United Nations (2006a)/(2006b)/(2006c).

Figure 16: The location of the USA within the social space of the European Union (2000/2003)

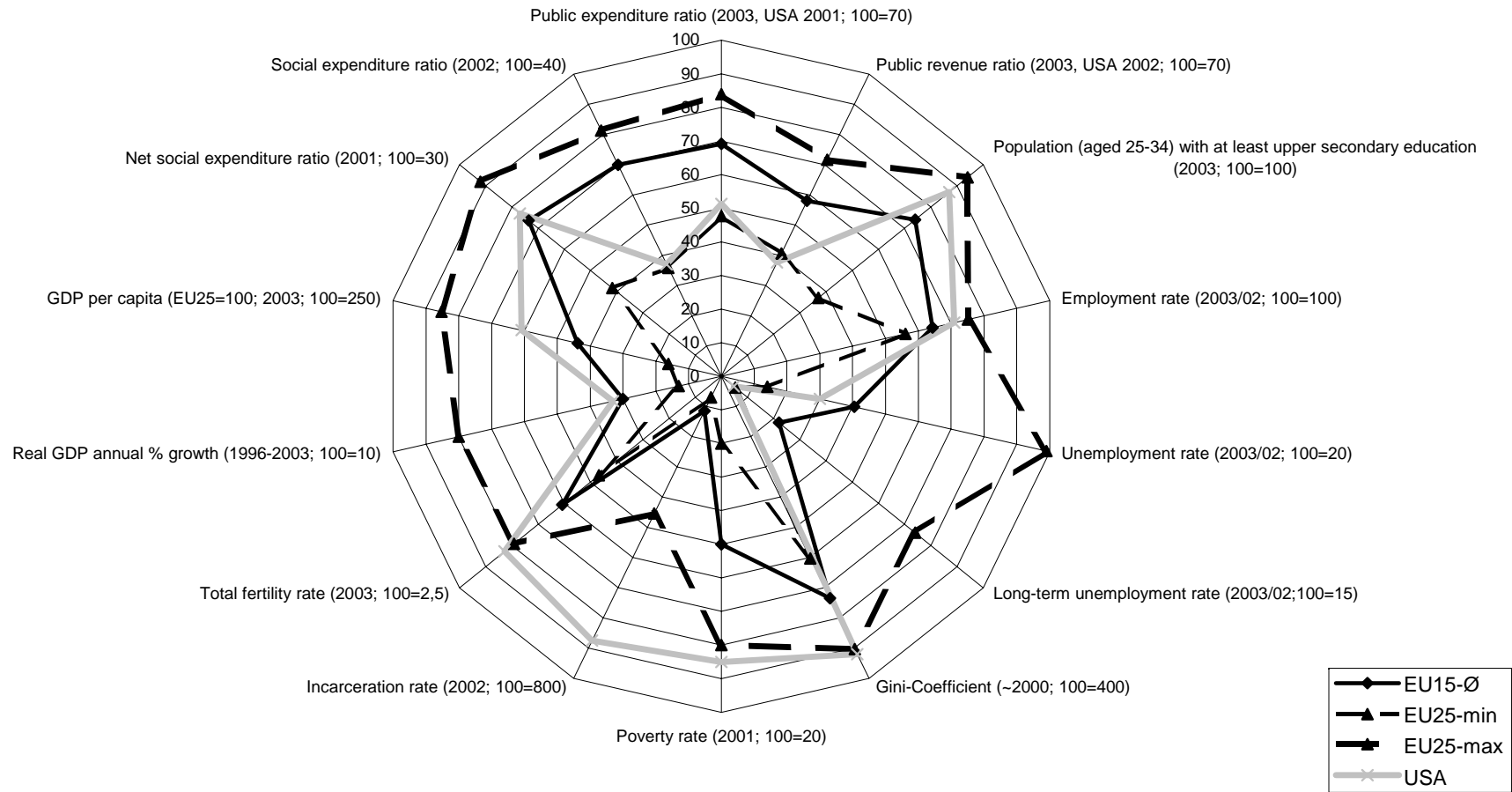


Figure 17: The U-curve of macro economic success

